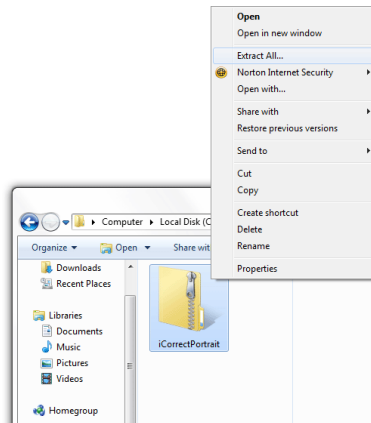


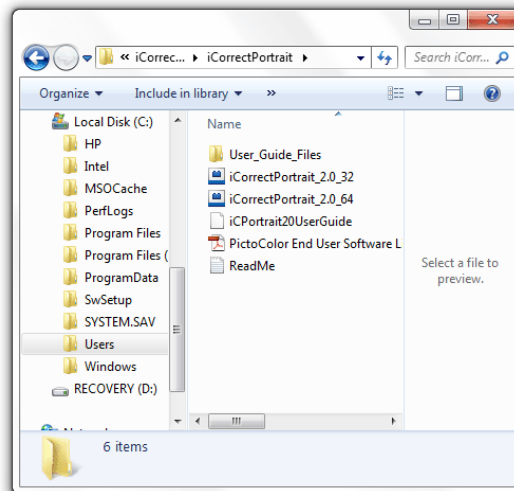
## Photoshop Installation Instructions for iCorrect 32/64 bit Plug-ins: OneClick 2.0, Portrait 2.0, and EditLab Pro 6.0. (Windows 32/64 bit versions) (Photoshop CS4, CS5, CS6, & CC)

(Note: Instruction screenshots and file folder names will reference iCorrect Portrait but also apply to iCorrect OneClick 2.0 and iCorrect EditLab Pro 6.0)

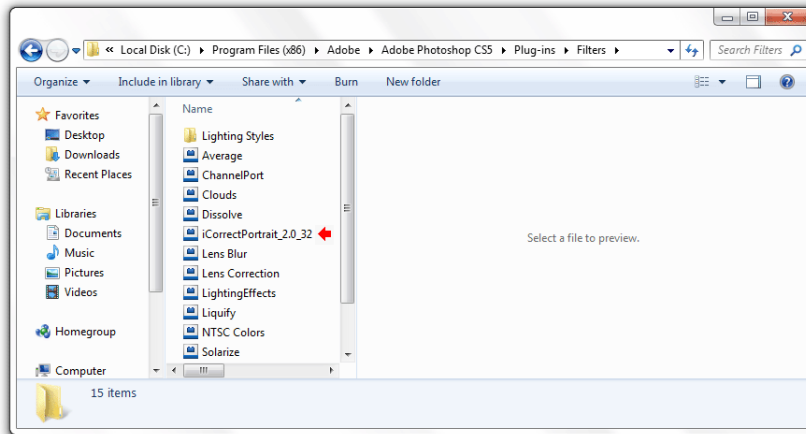
1. The iCorrect OneClick, EditLab, and Portrait files are in a compressed folder (as they will be if you have downloaded the product), extract the files by right-clicking the compressed folder (a zip archive) and then clicking Extract All. This will uncompress (unzip) the folder that contains the plug-in files.



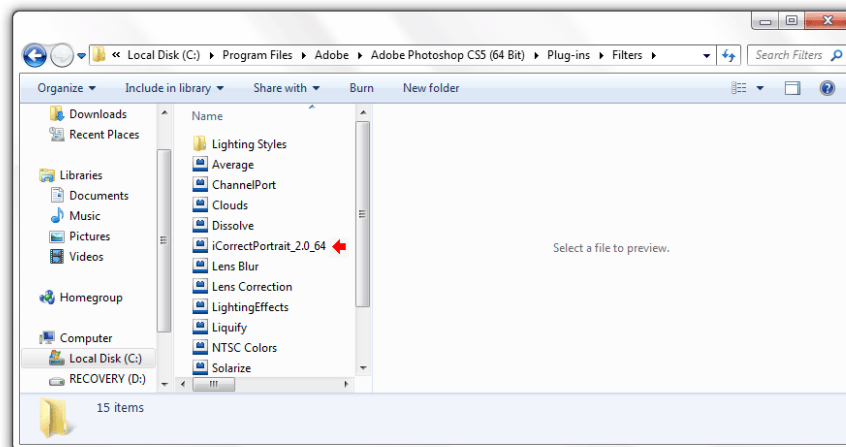
2. Look at the files contained in the iCorrect Plug-in folder. The **ReadMe** file contains a condensed version of these installation instructions. The software license agreement is provided in a PDF file. The User Guide may be viewed by opening the file named **iCPortrait20UserGuide** with a web browser. One or both of the plug-in files **iCorrectPortrait\_2.0\_32** and **iCorrectPortrait\_2.0\_64** must be copied into the host application's **Plug-Ins/Filters** folder, as described in steps 3 and 4. **Note: CS6, CC and Elements do not have a Filters folder so copy the plug-in file into the Plug-ins folder.**



**3.** To install for use in a **32-bit application** (Photoshop CS3 and earlier, Photoshop Elements, etc.), copy the file named **iCorrectPortrait\_2.0\_32** to the **Plug-Ins/Filters** sub folder of the host application folder. If you are installing in the 32-bit version of Photoshop CS4 or CS5, the application folder is usually located at **C:\Program Files (x86)\Adobe\Photoshop CSx\**. **Note: CS6, CC and Elements do not have a Filters subfolder so install the plug-in file in the Plug-ins folder.**



**4.** To install for use in a **64-bit application** (Photoshop CS4 and later), copy the file named **iCorrectPortrait\_2.0\_64** to the **Plug-Ins/Filters** sub folder of the host application folder, which is usually located at **C:\Program Files\Adobe\Photoshop CSx\**. **Note: CS6, CC and Elements do not have a Filters folder so install the plug-in in the Plug-ins folder.**



**5.** If you have installed both 32-bit and 64-bit versions of Photoshop CS4, CS5, CS6, and CC you may install both versions of the iCorrect Plug-in as well.