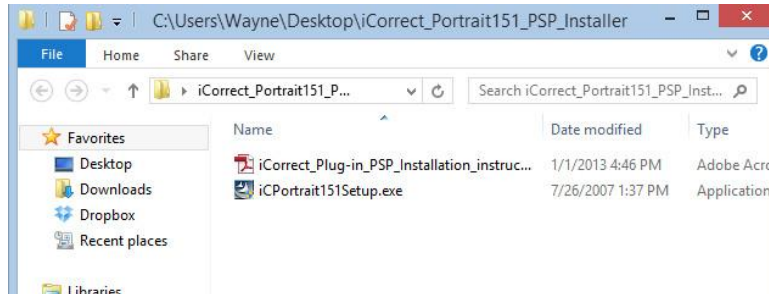


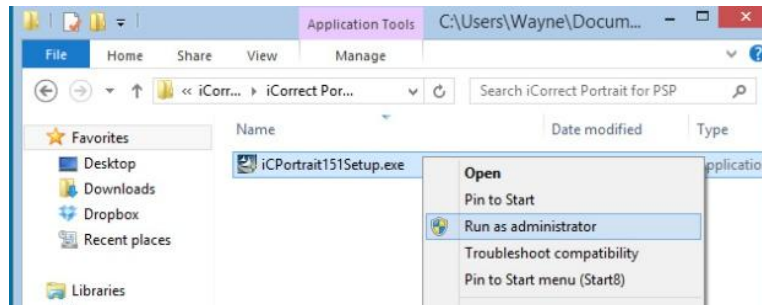
Photoshop Elements Installation Instructions for iCorrect Plug-ins: OneClick 1.5, Portrait 1.5, and EditLab Pro 5.5. (Windows 32 bit versions).

(Note: Instruction screenshots and file folder names will reference iCorrect Portrait but also apply to iCorrect OneClick 1.5 and iCorrect EditLab Pro 5.5)

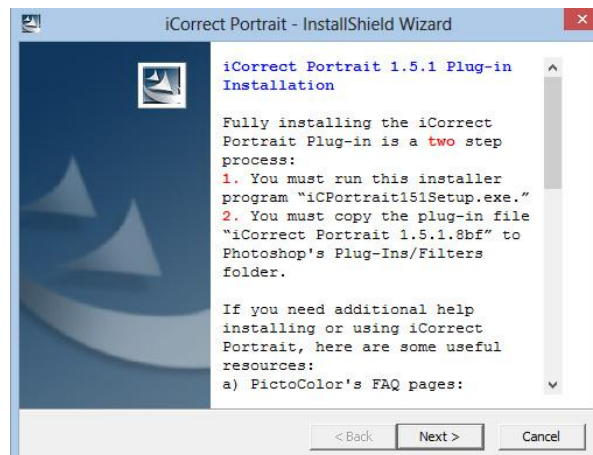
1. After downloading the installer .zip file extract the .zip file to access the folder that contains the plug-in **installer instructions (pdf)** and the plug-in install program (iCorrect xxxxxxxSetup.exe).



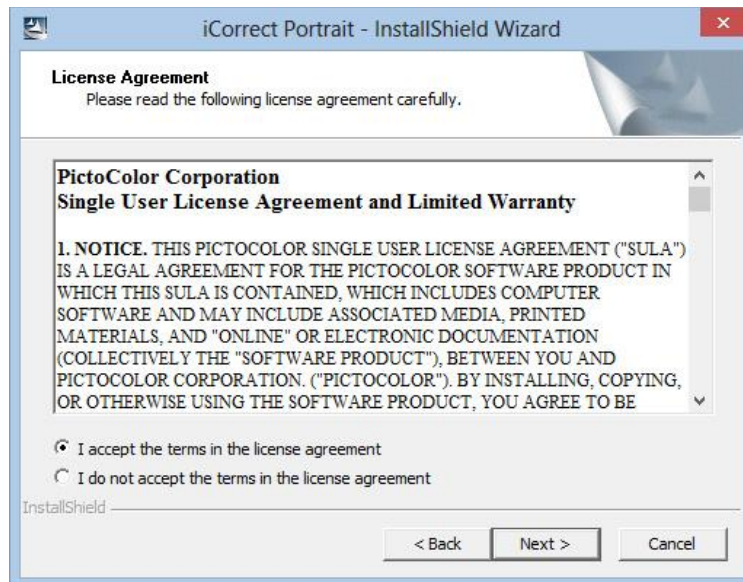
To launch the setup program right click on the setup file and select Run as Administrator on Win 7 and 8 systems and follow the instructions.



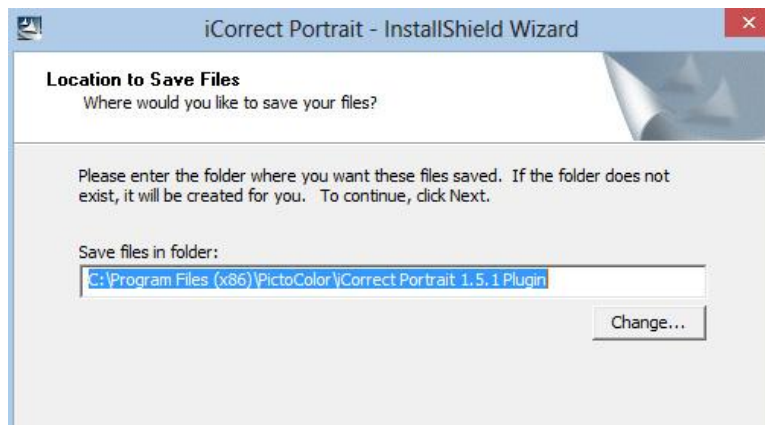
2. Read the installer notes and click *Next*. **Note that the procedure for installing a plug-in in Elements is explained toward the end of this document.**



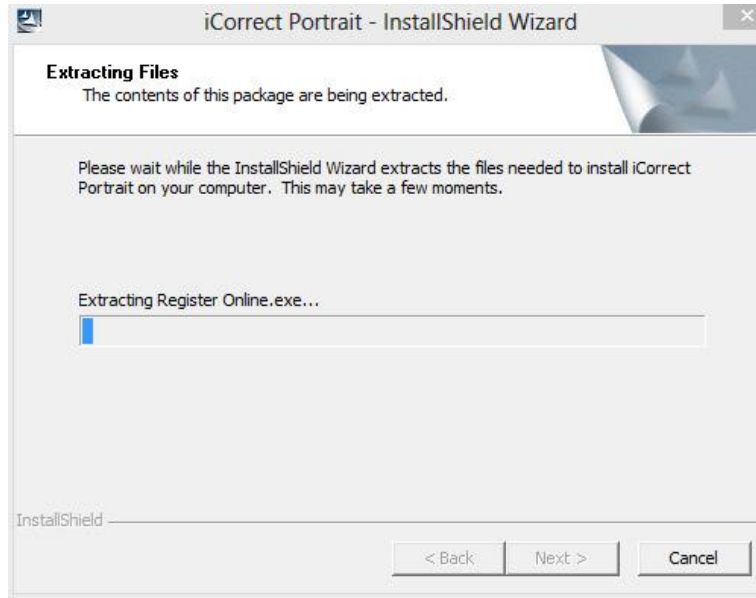
3. Read the License Agreement, click *I accept the terms in the license agreement* if you agree to its terms and then click *Next*.



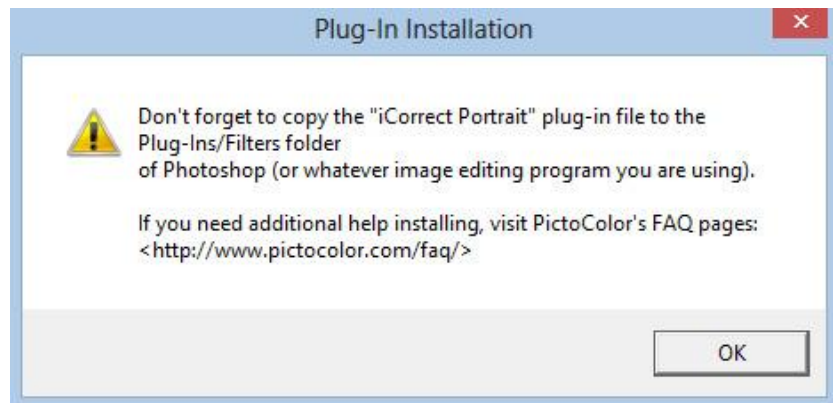
4. Select a location for the installation and click *Next*. The default location is shown in the window. This is the recommended installation location. Note: If you have a 64 bit computer the program file location will be Program Files (x86)



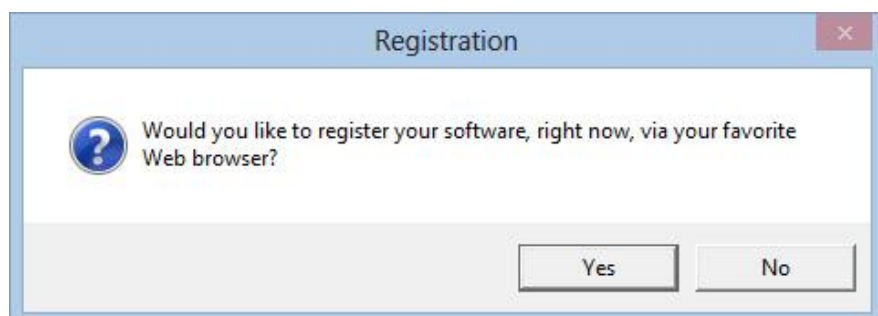
5. A progress display appears during installation.



6. Read the reminder message about the second installation step that must be performed (see 8 and 9 below).

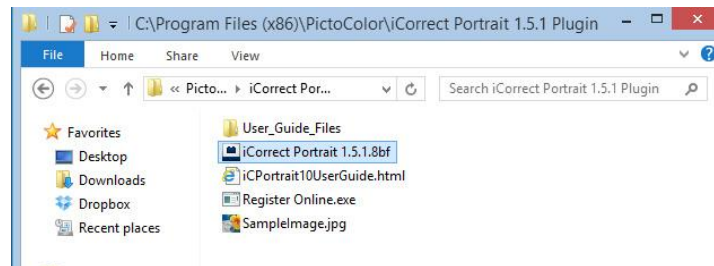


7. If you wish to register your software now, click Yes, otherwise click No.

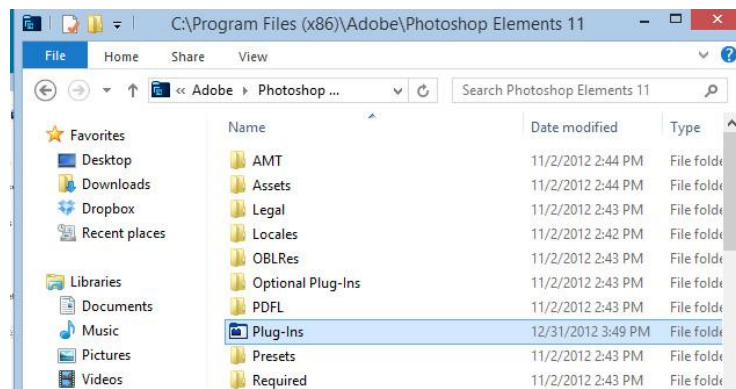


8. Look at the files that were installed (**C:\Program Files (x86)\PictoColor\iCorrect Portrait 1.5.1 Plugin**). The User Guide may be viewed by opening the file named **iCPortrait10UserGuide** with a web browser (depending on how your computer is set up, this file name may or may not have a .html extension). **Note: iCorrect OneClick does not have a User Guide file.**

The plug-in file iCorrect Portrait 1.5.8bf must be copied into Elements Plug-ins folder, as described in step 9.



9. The **iCorrect Portrait 1.5.8bf** plug-in file must be copied into Photoshop's Elements Plug-ins folder, as shown here.



10. Selecting and Launching iCorrect Plug-in

After copying the iCorrect plug-in in the Elements Plug-ins folder it is ready to use. (Note: if Elements was open during plug-in installation you must close it and re-open before the plug-in can be used.) With an image open in Elements go to the Filter menu and select PictoColor/iCorrect Portrait to launch the plug-in. Note: The first time you launch iCorrect plug-in you will have to enter the serial number to activate it.

