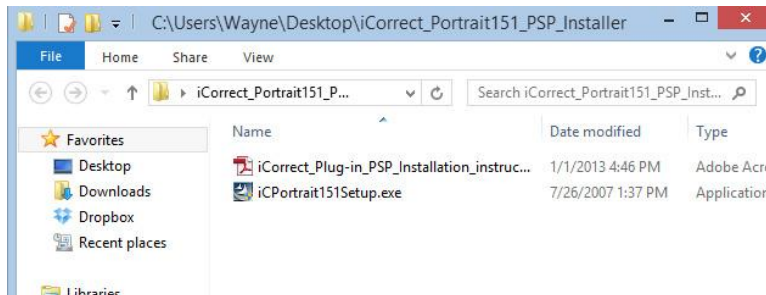


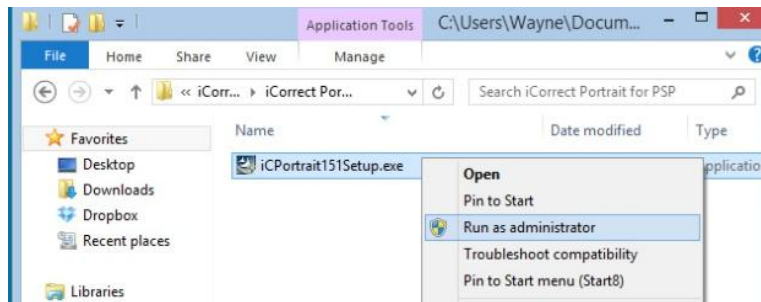
Corel Paint Shop Pro Installation Instructions for iCorrect Plug-ins: OneClick 1.5, Portrait 1.5, and EditLab Pro 5.5. (Windows 32 bit versions).

(Note: Instruction screenshots and file folder names will reference iCorrect Portrait but also apply to iCorrect OneClick 1.5 and iCorrect EditLab Pro 5.5)

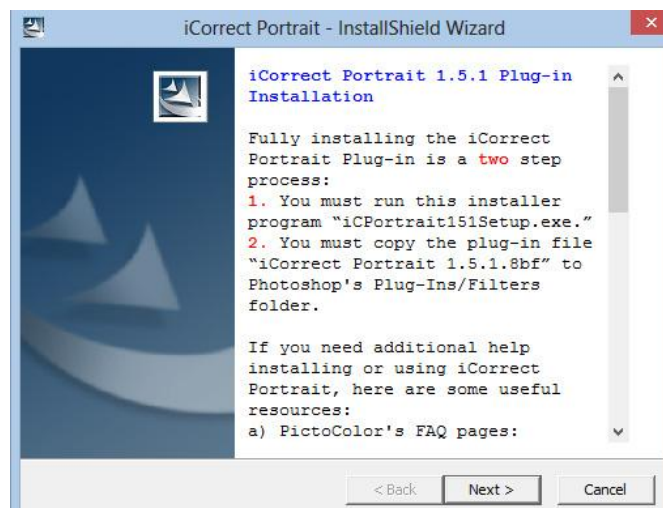
1. After downloading the installer .zip file extract the .zip file to access the folder that contains the plug-in **installer instructions (pdf)** and the plug-in install program (iCorrect xxxxxxxSetup.exe).



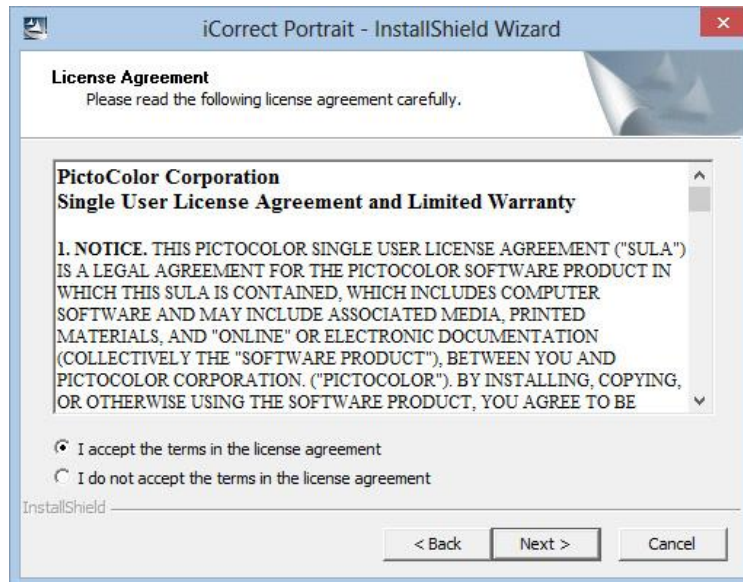
To launch the setup program right click on the setup file and select Run as Administrator on Win 7 and 8 systems and follow the instructions.



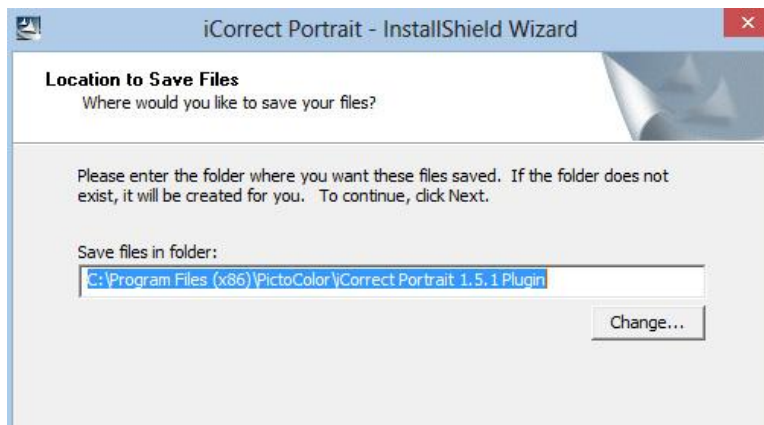
2. Read the installer notes and click **Next**. **Note that the procedure for installing a plug-in in PSP is explained toward the end of this document.**



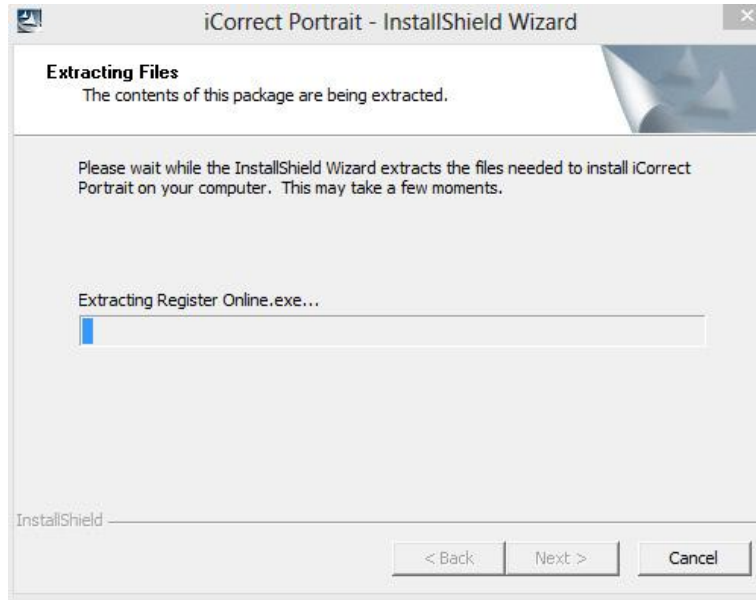
3. Read the License Agreement, click *I accept the terms in the license agreement* if you agree to its terms and then click *Next*.



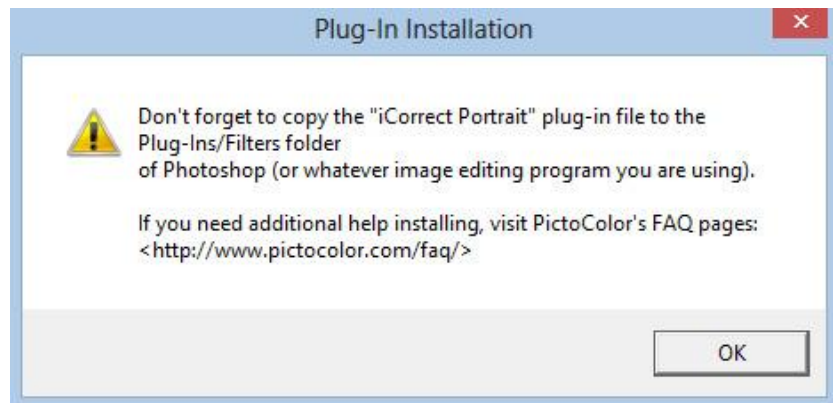
4. Select a location for the installation and click *Next*. The default location is a PictoColor folder in Program Files on the C drive. This is the recommended installation location. Note: If you have a 64 bit computer the program file location will be Program Files (x86)



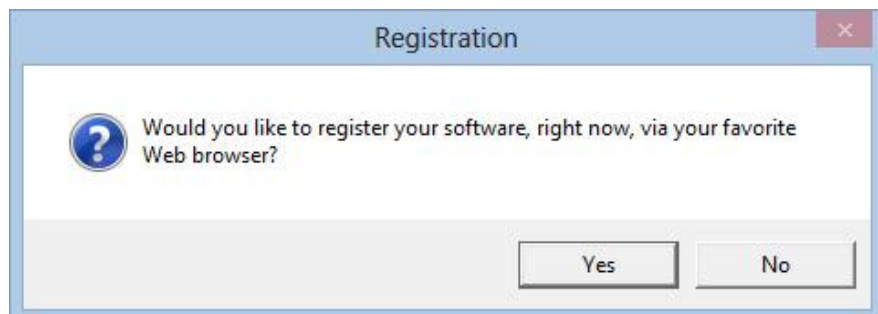
5. A progress display appears during installation.



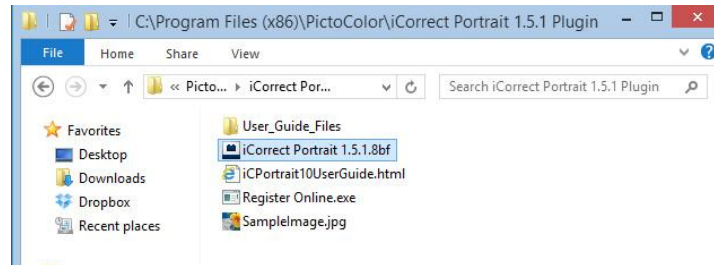
6. Read the reminder message about the second installation step that must be performed (see 9 below).



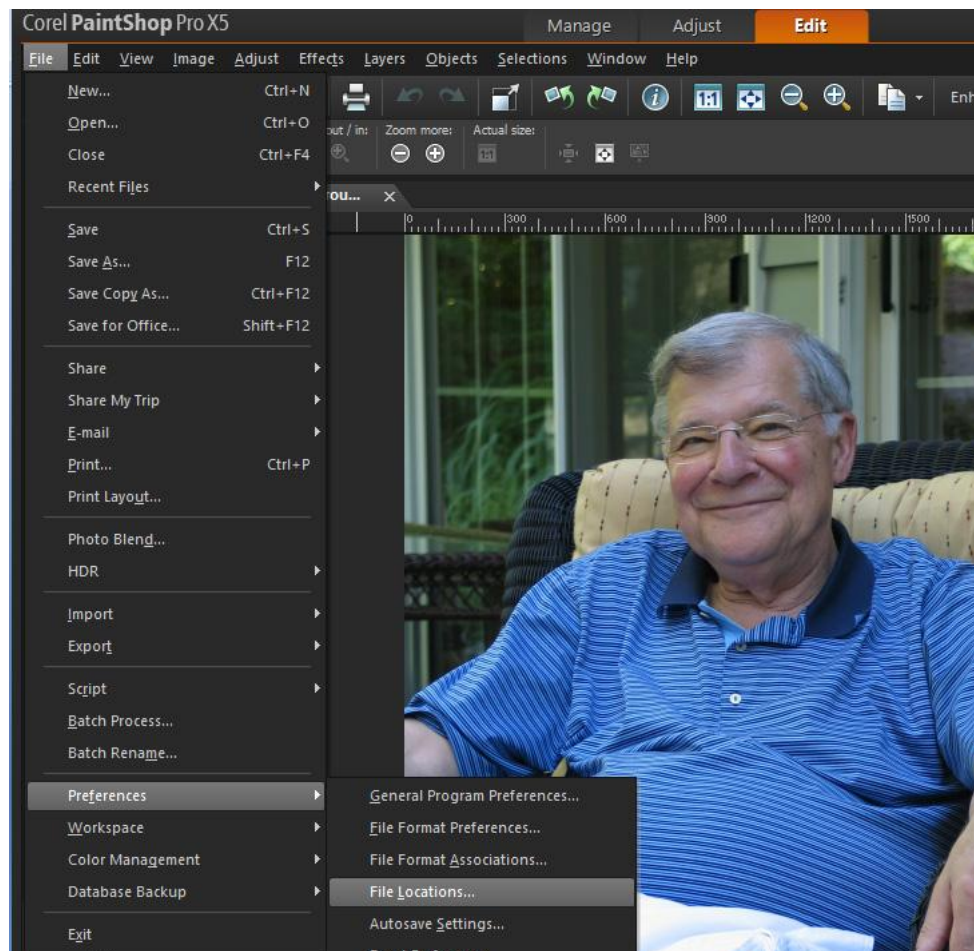
7. If you wish to register your software now, click Yes, otherwise click No.



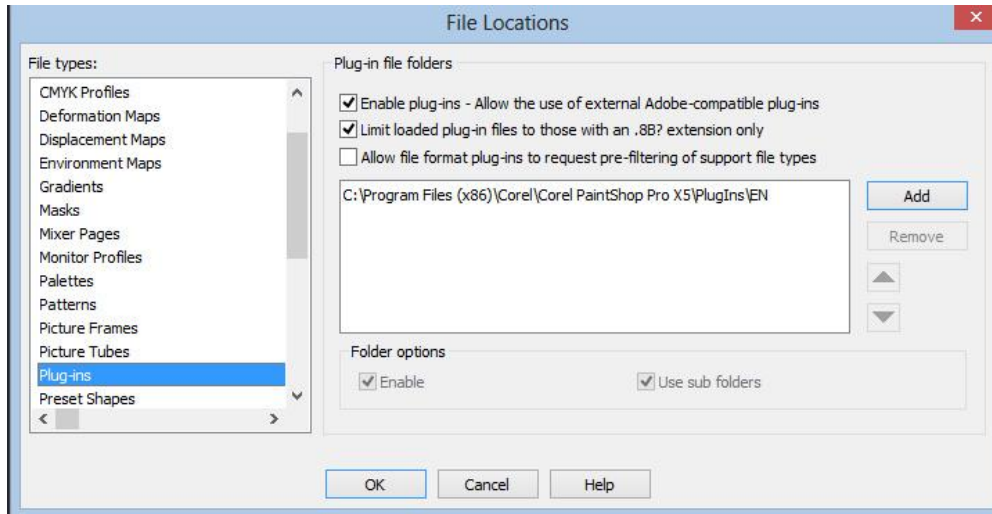
8. Look at the files that were installed (**C:\Program Files (x86)\PictoColor\iCorrect Portrait 1.5.1 Plugin**). The User Guide may be viewed by opening the file named **iCPortrait10UserGuide** with a web browser (depending on how your computer is set up, this file name may or may not have a .html extension). **Note: iCorrect OneClick does not have a User Guide file.**



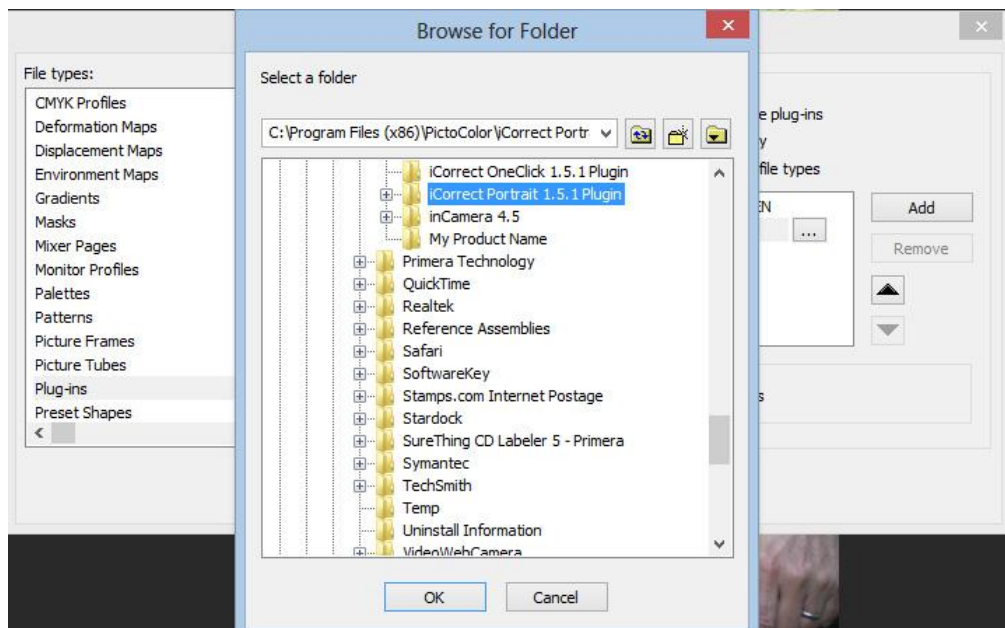
9. PSP's Enable Plug-in Procedure. Open PSP and choose **File-Preferences-File Locations**.



The File Locations box appears. Select Plug-ins from the pull down menu. Mark the **Enable Plug-ins** box and the **Limit Loaded plug-ins file to those with an .8b? extension box**.

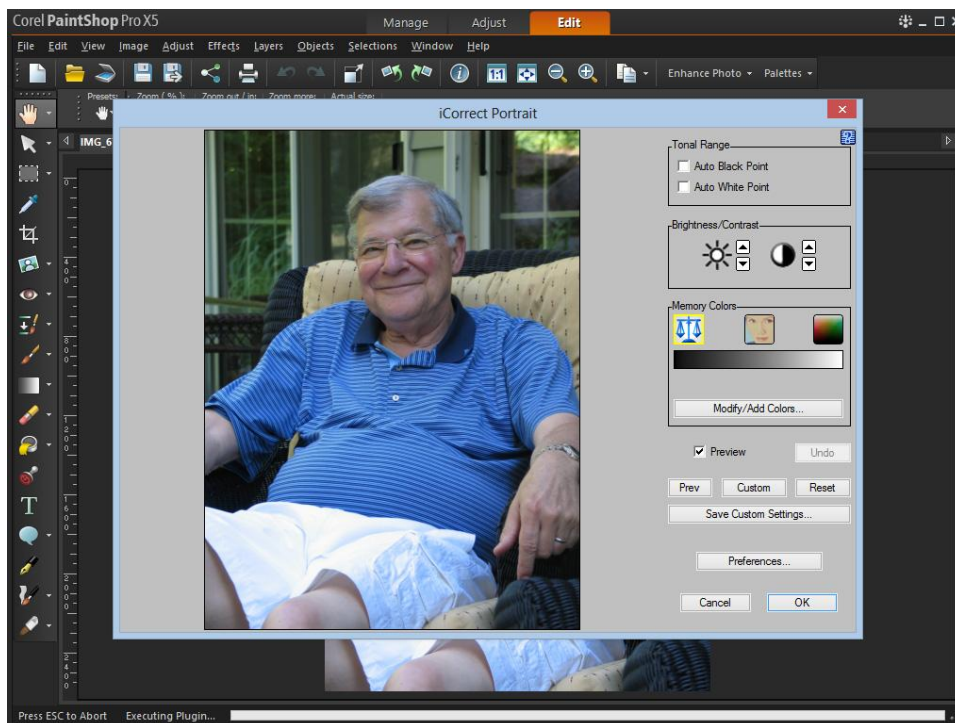


Click on the **Add** box and select the iCorrect Portrait folder in the PictoColor folder in the Program Files folder on the C drive. Click OK to add the plug-in to the File Locations window and click OK to add iCorrect Portrait to the Plug-ins menu. Repeat the process to install additional iCorrect Plug-ins into PSP.



10. Selecting and launching iCorrect Plug-in

With an image open in PSP go to the **Effects** menu and select **Plug-ins/PictoColor/iCorrect Portrait** to launch the plug-in. Note: The first time you launch the iCorrect plug-in you will have to enter the serial number to activate it.



After launching iCorrect Portrait click on the blue question for a Quick Start Guide or read the online User Guide for learn how the iCorrect Plug-in helps you Make the Color Right.