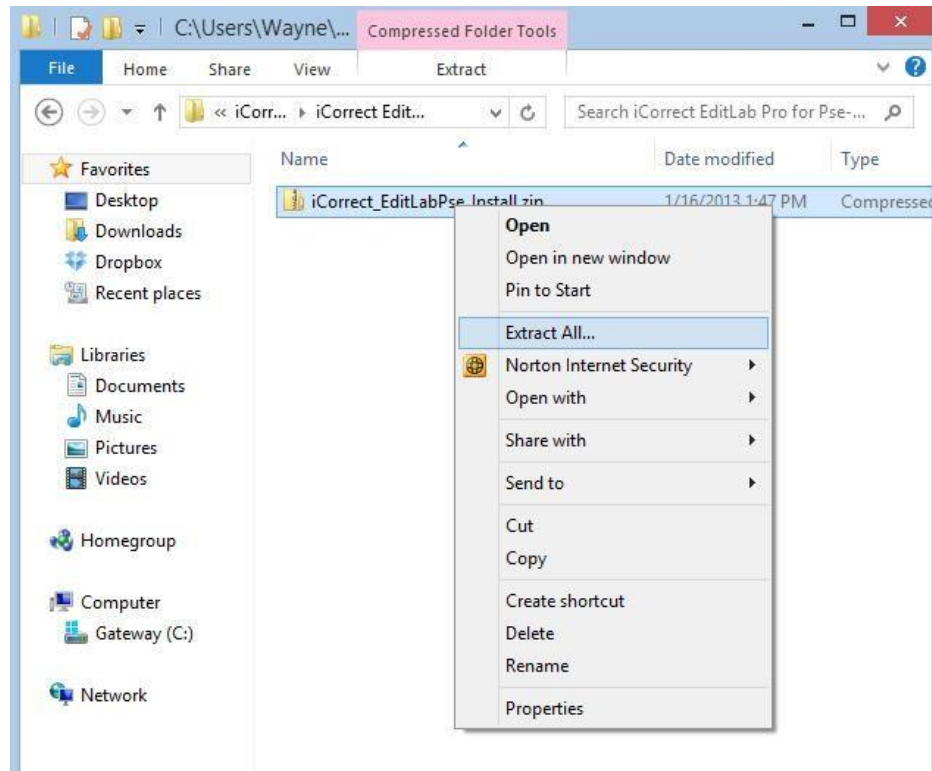


Photoshop Elements Installation Instructions for iCorrect Pse Plug-ins: OneClick, Portrait, and EditLab Pro. (Windows & Macintosh 32 bit versions).

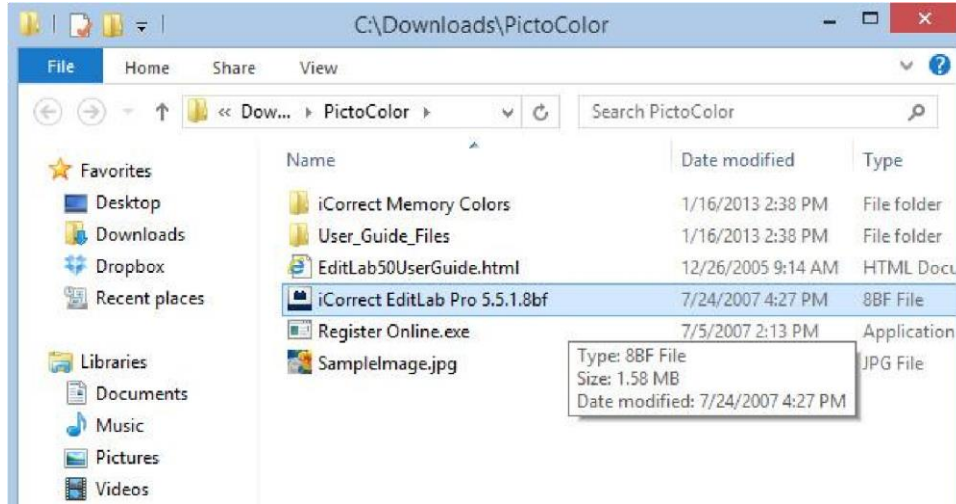
(Note: Instruction screenshots and file folder names will reference iCorrect EditLab but also apply to iCorrect OneClick and iCorrect Portrait. Screen shots may be slightly different depending on Win or Mac OS)

1. After downloading the iCorrect xxxx.zip installation file extract the .zip file to a folder on your computer such as a PictoColor folder in the Downloads folder.

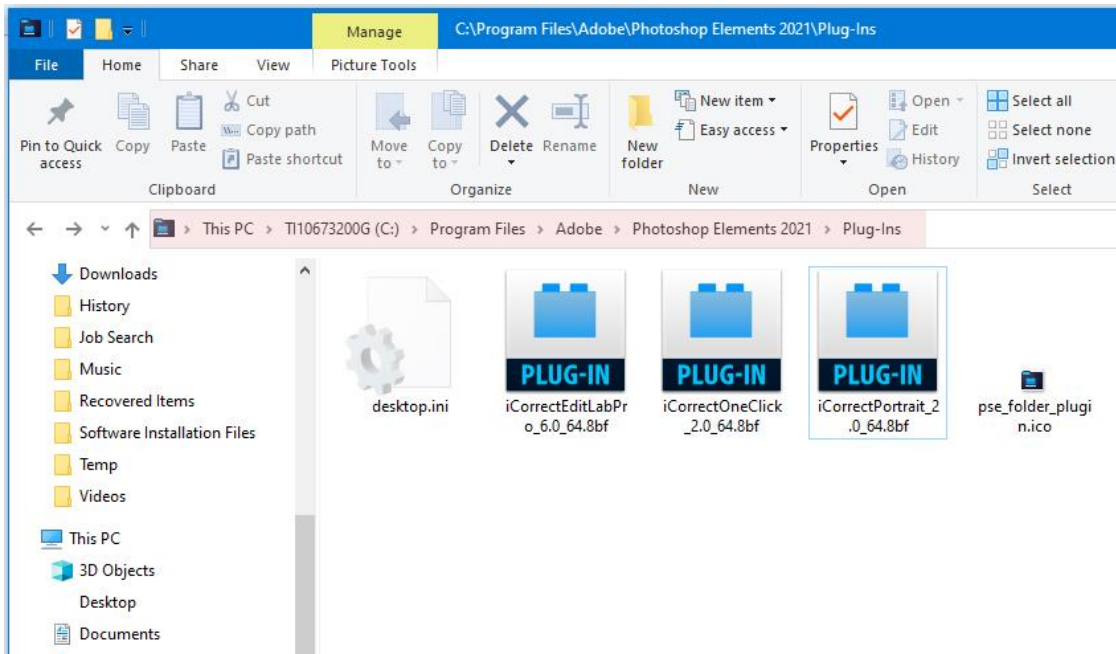


2. Look at the files that were installed (**C:\Downloads\PictoColor**). The User Guide may be viewed by opening the file named **iCEditLabUserGuide** with a web browser (depending on how your computer is set up, this file name may or may not have a .html extension). **Note: iCorrect OneClick does not have a User Guide file.**

The plug-in file **iCorrectEditLab Pro 5.5.1.8bf** must be copied into **Elements Plug-ins folder**, as described in step 3.



3. The **iCorrect EditLab5.5.1.8bf** plug-in file must be copied into Photoshop's **Elements Plug-ins folder**, as shown here.



10. Selecting and Launching iCorrect Plug-in

After copying the iCorrect plug-in in the Elements Plug-ins folder it is ready to use. (Note: if Elements was open during plug-in installation you must close it and re-open before the plug-in can be used.) With an image open in Elements go to the Filter menu and select PictoColor/iCorrect EditLab Pro to launch the plug-in. Note: The first time you launch an iCorrect plug-in you will have to enter the serial number to activate it.

