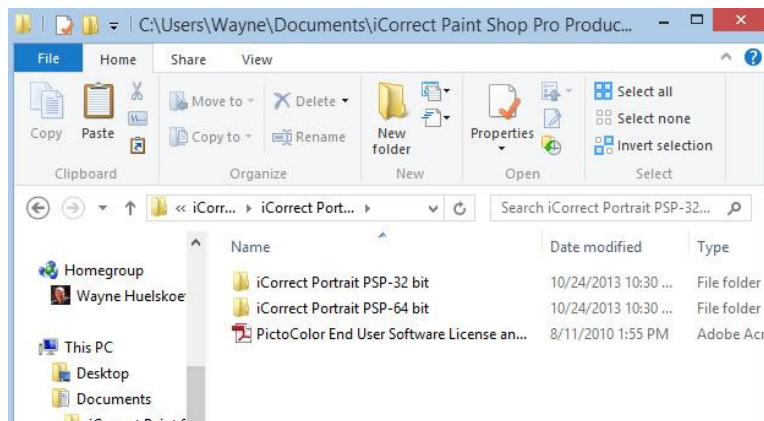


Corel Paint Shop Pro 32/64 Bit Installation Instructions for iCorrect Plug-ins: OneClick PSP, Portrait PSP, and EditLab Pro PSP. (Windows 32 & 64 bit versions).

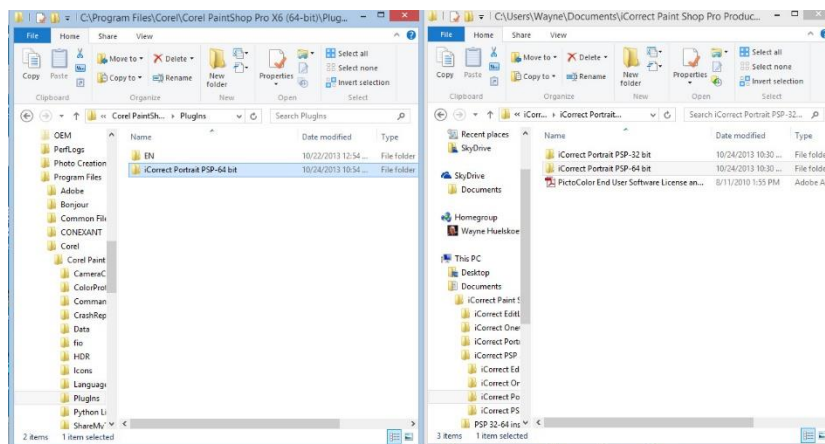
(Note: Instruction screenshots and file folder names will reference iCorrect Portrait but also apply to iCorrect OneClick and iCorrect EditLab Pro)

1. After downloading the iCorrect Portrait PSP-32&64.zip file extract the .zip file to access the folder that contains the **iCorrect Portrait PSP 32 bit and 64 bit plug-in folders** and the **PictoColor End User Software License Agreement**.



2. Read the License Agreement. PictoColor software is licensed for a single computer. Once you install the plug-in into PaintShop Pro you are bound by the terms of the agreement.

3. Next, Copy/Paste the **iCorrect PSP-64 bit** folder into the **C:/Program Files/Corel/Corel PaintShop Pro X6-X8 (64-bit)/Plugins** folder and the **iCorrect PSP-32 bit** folder into the **C:/Program Files (x86)/Corel/Corel PaintShop Pro X6-X8 (32-bit)/Plugins** folder. **Note: Install only the iCorrect PSP-32 bit folder in Corel PaintShop Pro versions X3-/X5.**

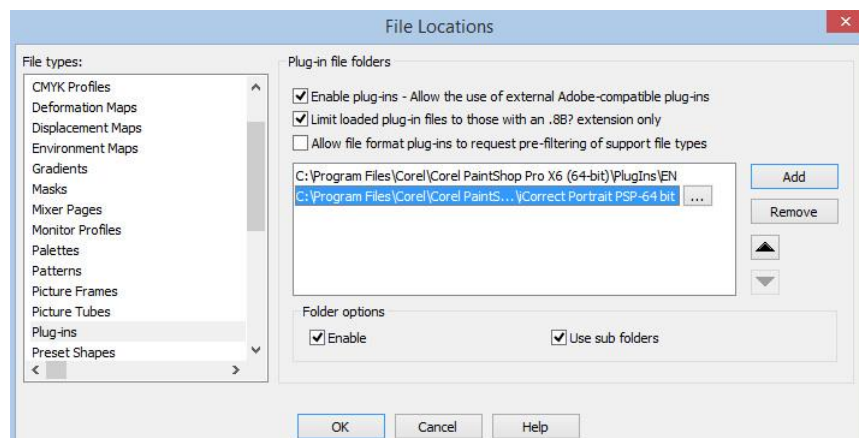


4. PSP's Enable Plug-in Procedure. Open PSP and choose **File-Preferences-File Locations**.



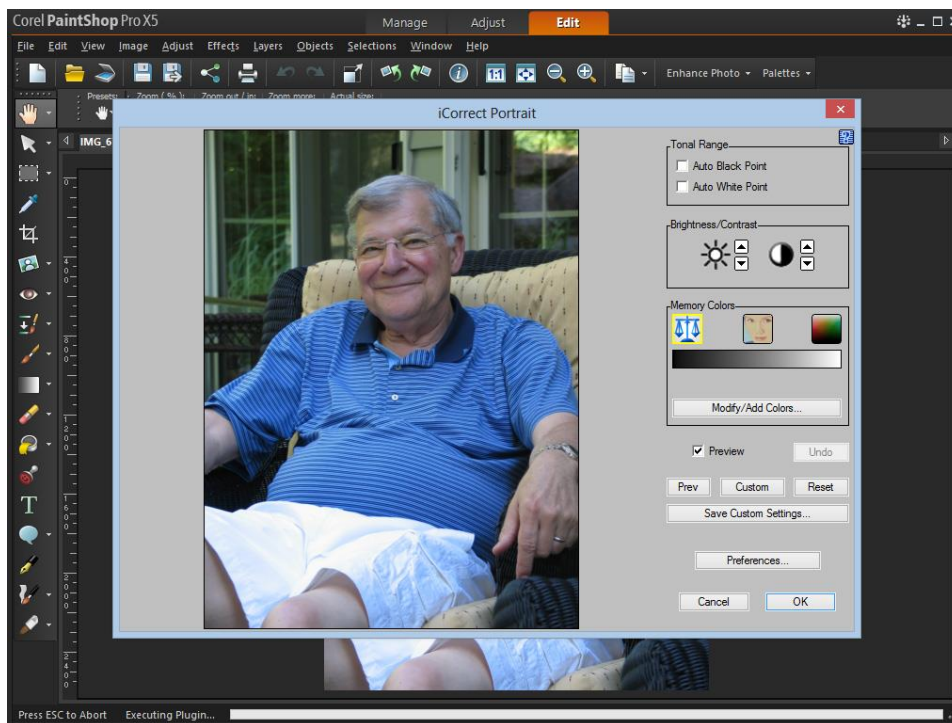
The File Locations box appears. Select Plug-ins from the pull down menu. Mark the **Enable Plug-ins** box and the **Limit Loaded plug-ins file to those with an .8b? extension only** box.

Click on the **Add** box and select the iCorrect Portrait folder in the Corel PaintShop Pro plugins folder (see step 3). Click OK to add the plug-in to the File Locations window and click OK to add iCorrect Portrait to the Plug-ins menu. Repeat the process to install additional iCorrect Plug-ins into PSP.



5. Selecting and launching iCorrect Plug-in

With an image open in PSP go to the **Effects** menu and select **Plug-ins/PictoColor/iCorrect Portrait** to launch the plug-in. Note: The first time you launch the iCorrect plug-in you will have to enter the serial number to activate it.



After launching iCorrect Portrait click on the blue question for a Quick Start Guide or read the online User Guide for learn how the iCorrect Plug-in helps you Make the Color Right.

6. iCorrect PSP 32-64 Plug-ins include the 32 bit version for PaintShop Pro Versions X3-X6 (32 bit) and 64 bit version for PSP X-6 64 bit. It is necessary to install the 32 bit version in 32 bit versions of PSP and the 64 bit version in X6 64 bit.